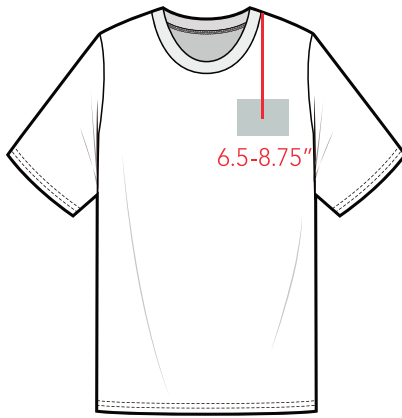


Standard Embroidery Placements and Sizing



Left/Right Chest

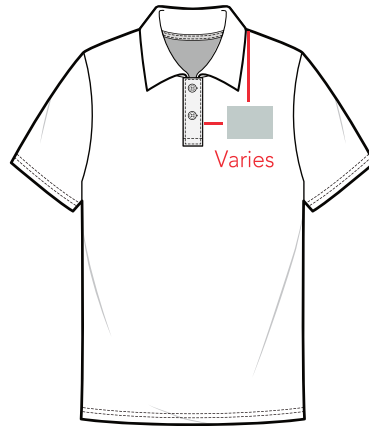
4" wide (up to 4" tall)

Mens: 7.5 -8.75" down

Womens: 6.5 -7.75" down/

Center of design aligned from top of shoulder to center of design

*Measured from top of the shoulder, exact placement determined by garment



Polo Left/Right Chest

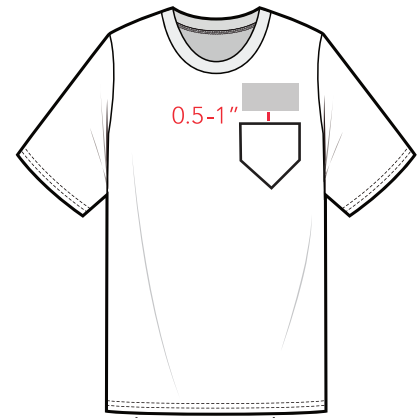
4" wide (up to 4" tall)

Mens: Aligned with 3rd button

Womens: 6.5 -7.75" down/

Center of design aligned from top of shoulder

*Measured from top of the shoulder, exact placement determined by garment



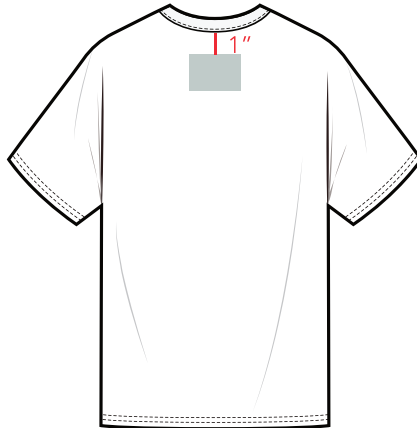
Above Pocket

4" wide (up to 3" tall)

0.5-1" above pocket

Max imprint 4"x3"

*Exact placement determined by design size and pocket placement



Yoke

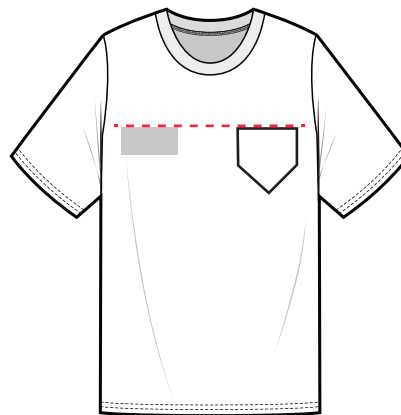
3-4" wide (up to 3" tall)

1" from collar

Max imprint 4.25"x4.25"

*Placement may differ to avoid tags or seams

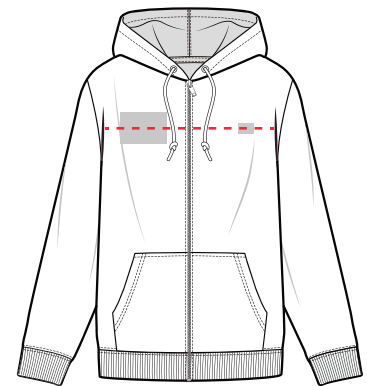
*Additional charges apply



Chest Aligned W/ Pocket

4" wide (up to 4" tall)

Top of design aligned w/top of pocket

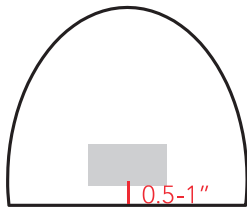


Chest Aligned with Tag

4" wide (up to 4" tall)

Center of design aligned with center of tag

*Exact placement determined by size of logo and placement of tag/logo

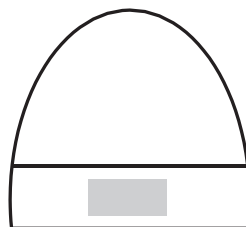


Beanies

4" wide (up to 3" tall)

Design centered 0.5" -1" above bottom

*Exact placement determined by garment style and design size



Cuffed Beanies

3-4" wide (Height varies)

Design centered on cuff

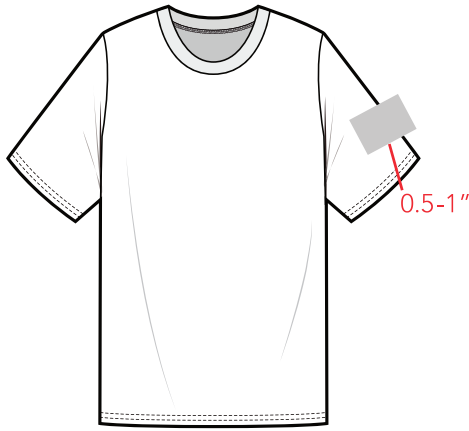
*Exact placement determined by garment style and design size

*All bags and luggage are by approval only. Client must be prepared to send a sample for approval prior to job being scheduled. Additional charges apply.

*Blankets/towels/accessories placement and max imprint size determined on case -by-case basis.

*Port/Internal Pockets are used by request ONLY. Additional charges apply.

Standard Embroidery Placements and Sizing (Cont.)



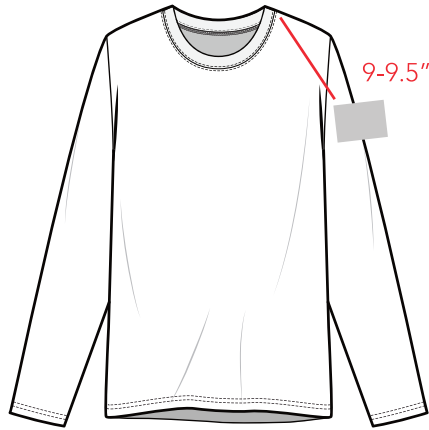
Left/Right Short Sleeve

3-3.25" wide (up to 3" tall)
0.5-1" from seam

Mens: Max imprint 4.25"x4.25"

Womens: Max imprint 3.25"x3.25"

*Not all sleeves can be decorated, max design size determined by garment



Left/Right Long Sleeve

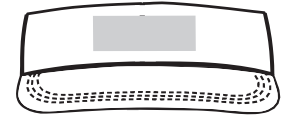
3-3.25" wide (up to 3" tall)

9-9.5" from top of shoulder

Mens: Max imprint 4.25"x4.25"

Womens: Max imprint 3.25"x3.52"

*Not all sleeves can be decorated, exact placement determined by garment style/size
*Pockets or seams on sleeves may affect placement

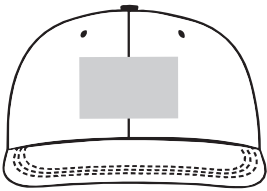


Visors

4-4.5" wide (up to 1" tall)

Max imprint 4.5"x1" on most visors

Centered on flat portion of hat



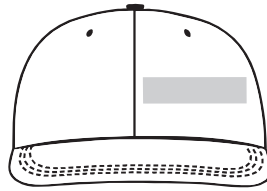
Hat Front - Center

4-4.5" wide (up to 2" tall)

Centered on flat portion of hat

Max imprint size 5"x2.25"

on most hats



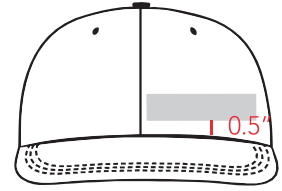
Hat L/R Panel - Center - Center

3" wide (up to 2" tall)

Left or right panel of hat,

Centered on X AND Y -axis of panel

Max imprint size 3"x2"



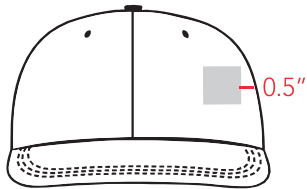
Hat L/R Panel - Center - Low

3" wide (up to 2" tall)

Centered X-axis of panel /

0.5" up from bill

Max imprint size 3"x2"



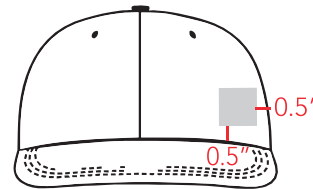
Hat L/R Panel - Justified - Center

Up to 3" wide (up to 2" tall)

Max imprint size 3"x2"

Centered on Y -axis of panel of

hat / 0.5" from panel side seam

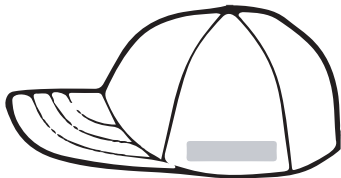


Hat L/R Panel - Justified - Low

Up to 3" wide (up to 2" tall)

Max imprint size 3"x2"

0.5" from bill / 0.5" from panel side seam



Hat Left/Right Side

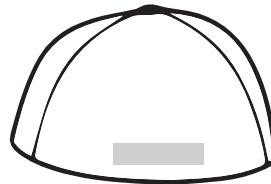
3" wide (up to 1.5" tall)

Centered on side as

low as possible

Max imprint 3"x1.5"

on most hats/designs



Hat Back

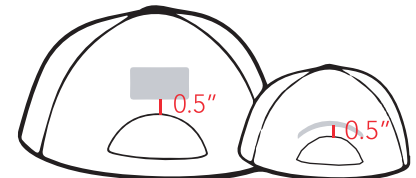
3" wide (up to 1.5" tall)

Centered on back as

low as possible

Max imprint 3.5"x1.5"

on most hats/designs



Adjustable Hat Back

3" wide (height varies)

0.5" above hat opening

Max imprint 3.25" wide, height varies

*In most cases we sew through sweatbands to ensure straightness of imprint

* Additional charges apply

*In most cases we sew through sweatbands to ensure straightness of imprint

R:\Printing\RPS\Print Ready Flyer

Questions? Concerns? Reach out!

775.313.9720 - info@renoprintstore.com

280 Greg St., Ste 5 • Reno, NV 89502

RPS

RenoPrintStore.com